

## LEARN THE PARTS OF A FLOWER!

Pollination is the transfer of pollen from the male part of a flower (stamens) to the female part of the flower (pistils) for fertilization and the production of seeds. Learn the basic parts of a flower by creating your own!

## MATERIALS YOU'LL NEED:

- Print out flower stencil (attached)
- Label print outs (attached)
- Pipe cleaners, twist ties, or yarn
- Colored paper or white paper and coloring utensils
- Plastic Spoon
- Tape or Glue, Scissors
- Green felt or green paper

## BEGIN! FOLLOW THESE STEPS:

### STEP 1

Create the petals by using the attached flower tracer.



### STEP 2

Grab two pipe cleaners or similar items (yarn, twist ties, etc) and fold both in half. Fold in the ends to make the stamen.



### STEP 3

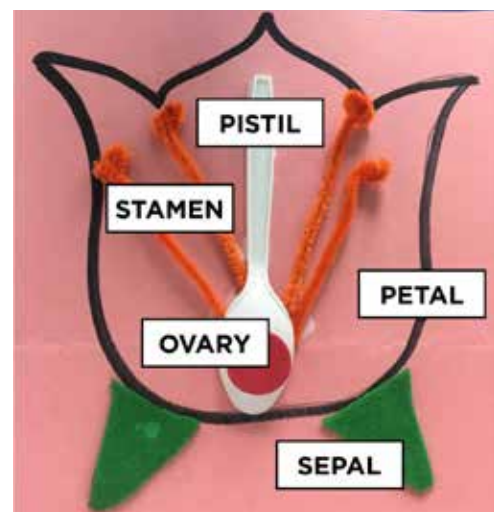
Grab a spoon; this will be the pistil. Glue pipe cleaners to the inside of the spoon, with the stamen pointing out. Glue or tape the spoon face down in the middle of the petals.

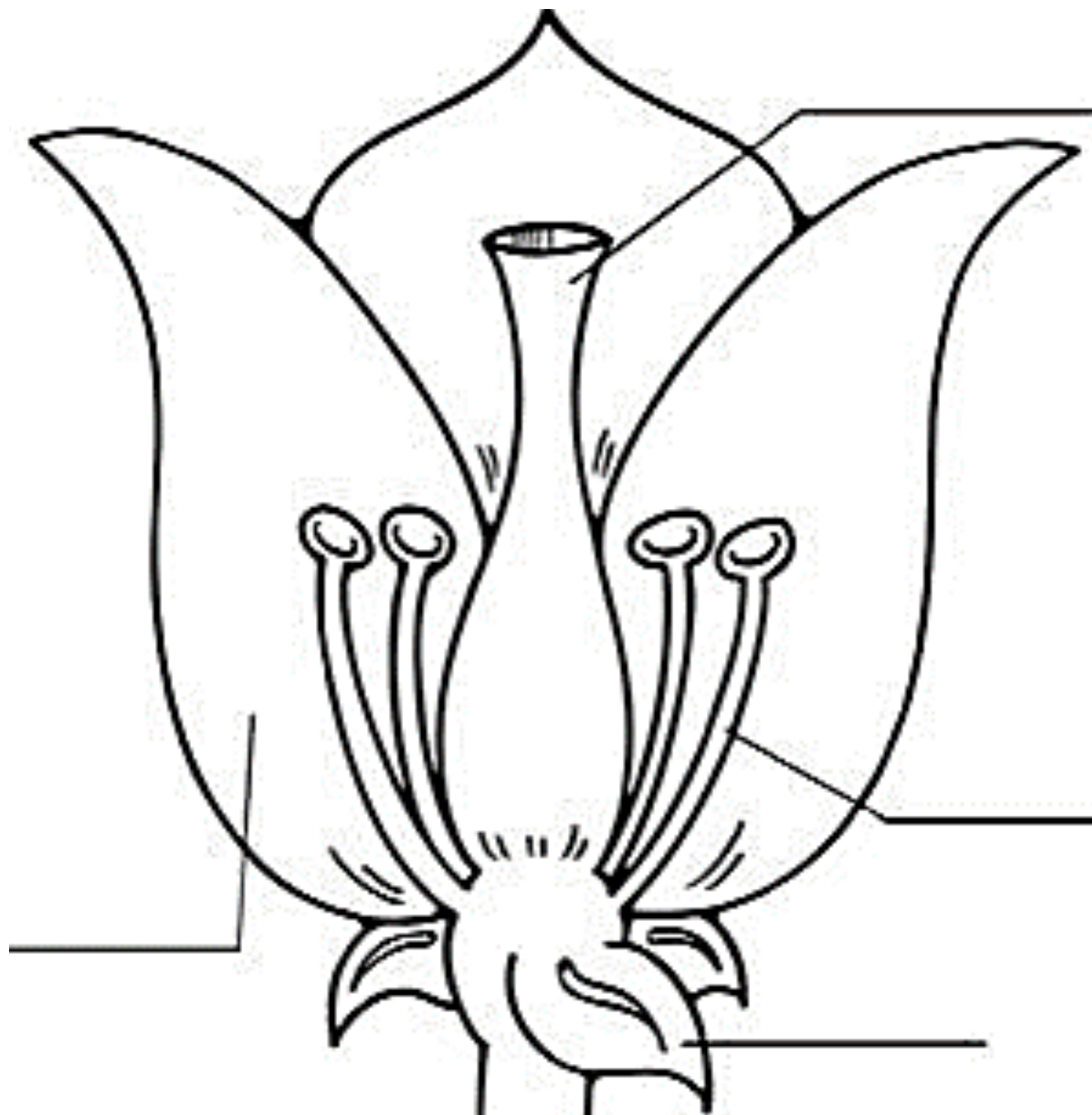
### STEP 4

Cut and attach two green felt pieces (or green paper) for the sepals. Create a circle for the fruit, which develops the ovary inside the pistil. The fruit will produce new seeds!

### STEP 5

Label your flower diagram using the label print outs attached!





**PETAL**

**STAMEN**

**PISTIL**

**OVARY**

**SEPAL**

# PARTS OF THE FLOWER

Some flowers only have male parts (stamen) or only female parts (pistil), but many flowers actually have both! Pollen from the stamen must travel down the pistil for a fruit and seeds to develop!

